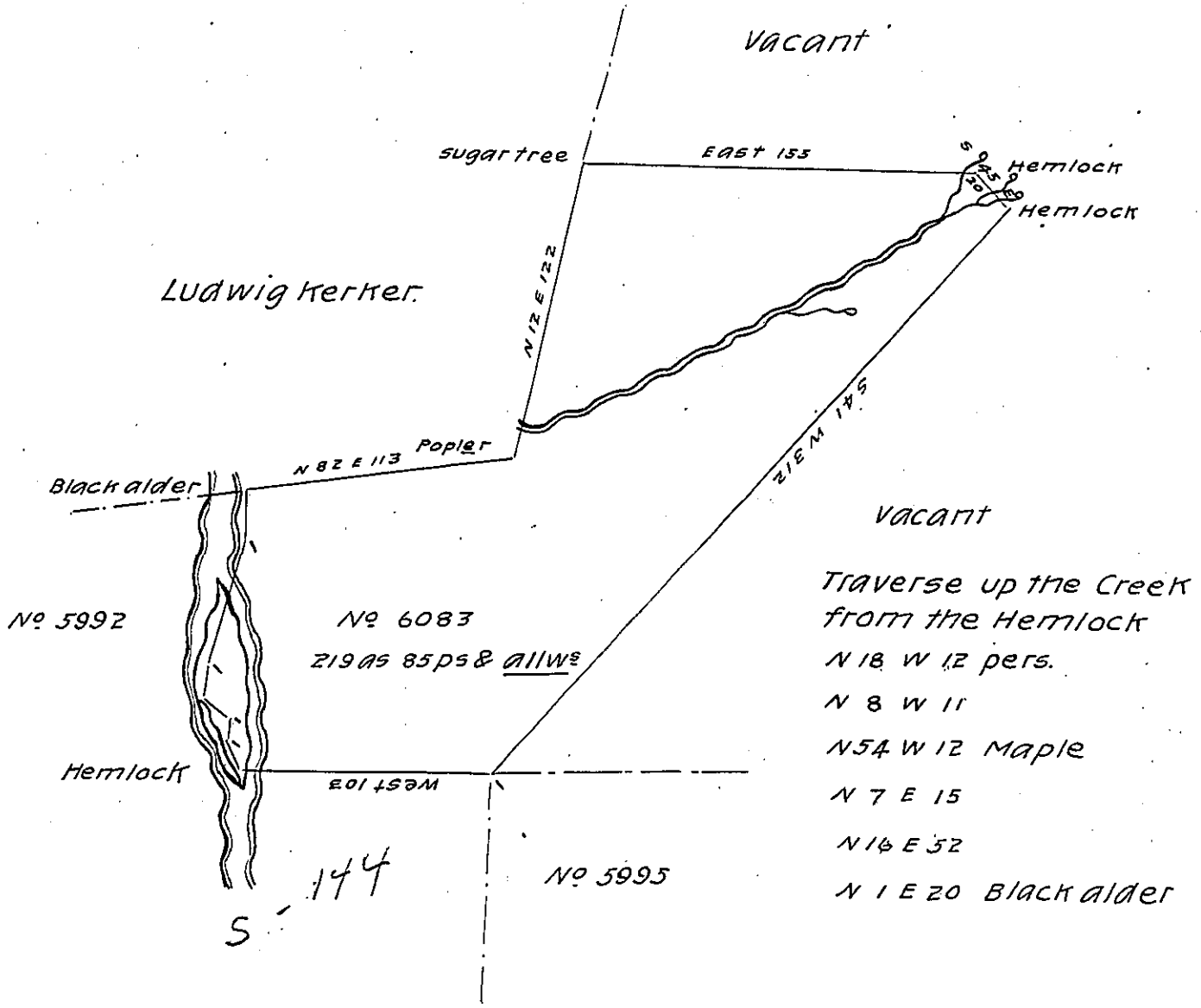


Trustees of Reding Academy



Surveyd the above discribed tract of land on the 20th of August 1816 for James English, Junr by virtue of his Warrant Dated the 10th June 1816, Containing two hundred & nineteen acres & Eighty five perches with the allowance of six per cent Situate on the East branch on pine Creek about three miles from the Mouth in Mifflin * Township Lycoming County including ~~small island~~ an improvement of about six acres cleared Land with temporary house ^{man} with a residing therein improvement began 1810.

David McMicken D.S.

To Richard T. Leech Esqr

Surveyor General.

* Brown tow^p

IN TESTIMONY that the above is a copy of the original remaining on file in the Department of Internal Affairs of Pennsylvania, made conformably to an Act of Assembly approved the 16th day of February, 1833, I have hereunto set my Hand and caused the Seal of said Department to be affixed at Harrisburg, this twenty fourth day of August 1904

James P. Brown
Secretary of Internal Affairs.